



HYDRAULIC PRESSES FOR BOOK BINDING

for finishing of Hard-Cover/Perfect-Bound Books, Diaries, Dictionaries & Directories etc.

Smashing & Nipping Press

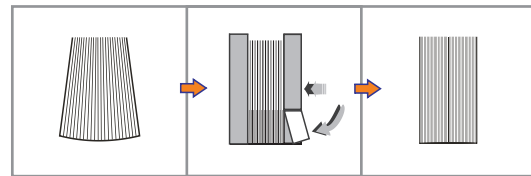
Smashing is the process of removing the air from the folds and flattening the overall area of the book-blocks. Smashing strokes can be set in multiples to suit the flattening requirement for rectangular shape. Book-block is held firmly on completion of Smashing cycle and the Nipping operation follows for knocking out the excessive swell in the spine.

Smashing strokes (*adjustable*) from one to nine with two Nipping Strokes, timing set in 0.1 Seconds increments through PLC (*Programmable Logic Controller*) and adjustable Hydraulic Pressure. Production speed of 600 to 700 Books (*single book of 30mm spine thickness*) per hour can be achieved.

Some of the other operator friendly features on the control Panel are Manual & Semi-auto option; Dedicated Switches for Clamping (*Smashing*) and Nipping functions in Manual mode, Counter for number of books processed.

Emergency and Recycle Push-buttons are located conveniently on the Top Cover. For operator's safety: both the Push-Buttons need to be pressed simultaneously & Emergency Switch aborts the cycle immediately in case of an accident. Safety Hood is incorporated for operator protection. The high speed blower / exhaust fan ensures the ambient temperature in the Power Pack Area is maintained.

Machine can be supplied with larger Pressure Plates to suit Book-height of 210mm or 250mm on request. PLC Based control panel for optimum reliability and simplified diagnostics.



Technical Specifications

Description	Unit	SNP33	SNP41	SNP46
Book Block Size	mm	330X130/180	410X130/180	460X130/180
Book Spine (<i>Min-Max</i>)	mm	10-110	10-110	10-110
System Clamp Pressure (<i>Adjustable upto</i>)	kgs	5000	5000	6000
Nipping Pressure (<i>Adjustable upto</i>)	kgs	3000	3000	3500
Electrical Load / Motor	kva/HP	2.25/3	2.25/3	2.25/3
Electrical Supply		400/440V AC 50Hz 3Ph		
Hydraulic Oil Capacity	ltrs	65	75	95
Overall Dimension (WxDxH)	cms	63X119X96	73X119X96	85x119x96
Net Weight (Approx.)	kgs	660	720	780

Smashing & Nipping Press



Joint Forming Press



Twin Book Press



Twin Joint Forming Press



Major Edge Squaring



Twin Corner Cutting



Baling Press

Manufactured & Marketed by :

JOY D-ZIGN ENGINEERS PRIVATE LIMITED

Regd. Office: 1, Motia Khan, New Delhi - 110055, INDIA.

Tel.: +91 11 2361 2555, 6535 5505, 6536 6281 Fax : +91 11 2363 4555

Works : Plot No. 13, Road No. 1A, Mundka Udyog Nagar, Delhi - 110041, INDIA.

Tel : +91 11 2834 2675, 6536 6282 Fax : +91 11 2834 2683

E-mail : info@joydzn.com Website : www.joydzn.com